



Ultrasound Solutions

# How to install and use Sherlog Report Creator

# Table of Contents

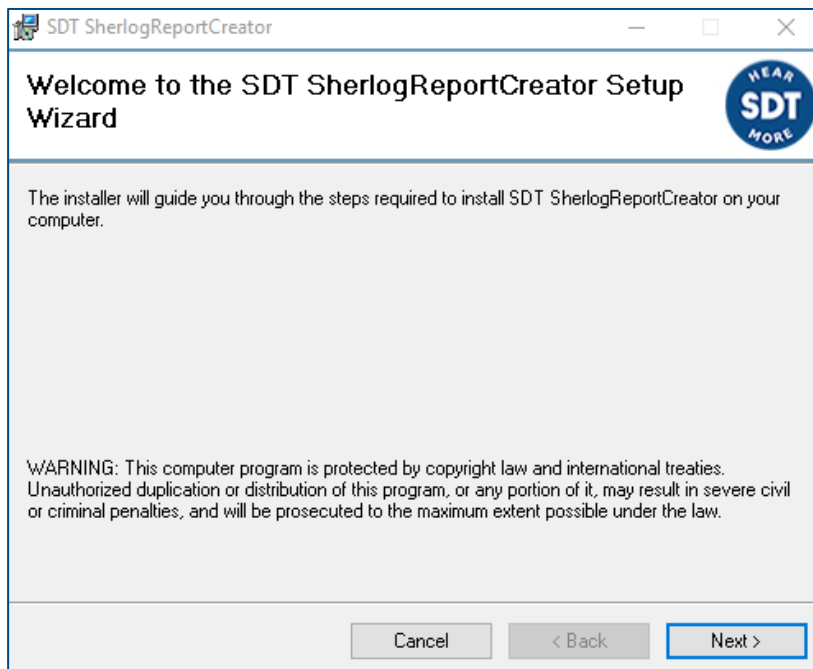
1. Installation of the software .....	3
2. Using the SDT Sherlog Report Creator .....	5
a. Add new hatch covers .....	7
b. Add new doors .....	8
c. Add new windows .....	9
d. Change the tab position .....	10
e. Remove a tab.....	10
f. Add and remove new leaks, drains valves, .....	11
g. Import data from a Sherlog TA file .....	13
h. Generate a report.....	14
i. Additional options .....	16

# 1. Installation of the software

- Download the file "[SDTSherlogReportCreatorSetup.msi](#)" on your computer and run this file when download is complete.

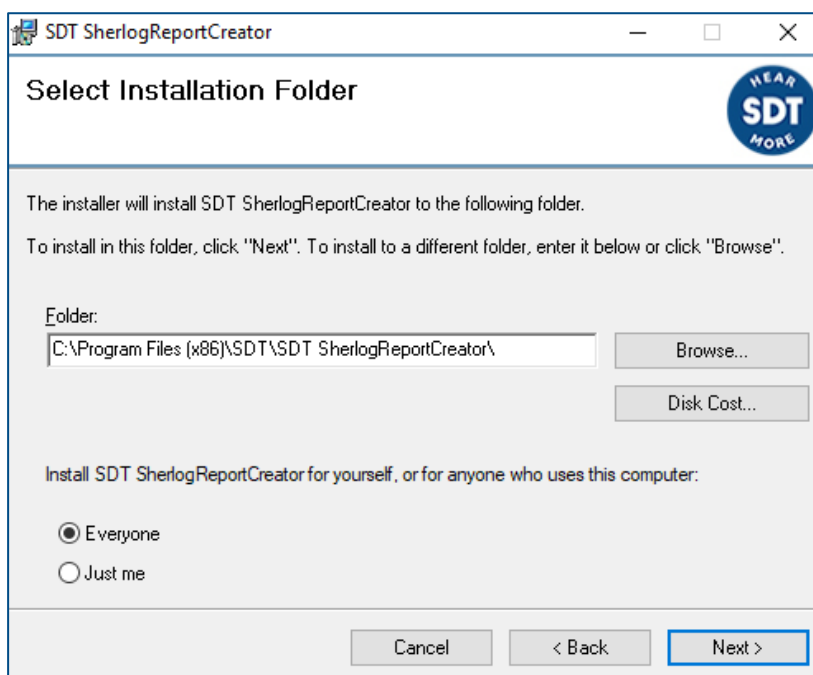
## Starting up the installation:

You should now see the following screen:



- Click "**Next**".

Then, the following screen appears:



By default, the **SDT SherlogReportCreator** software will be installed in the folder:

C:\Program Files\SDT\SDT SherlogReportCreator (for 32-bit Windows OS)

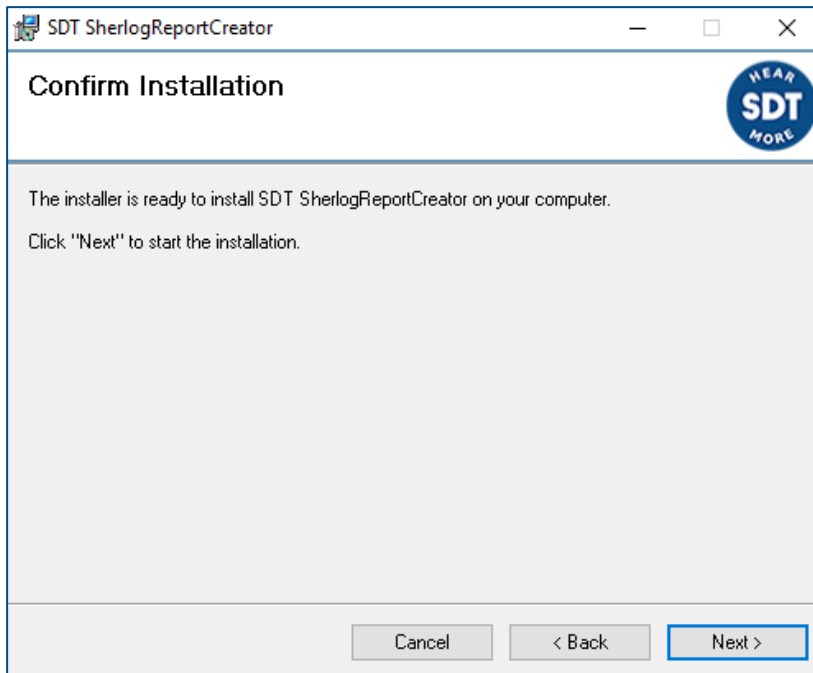
- or -

C:\Program Files(x86)\SDT\SDT SherlogReportCreator (for 64-bit Windows OS)

You can specify a different location at your convenience by clicking on "**Browse**".

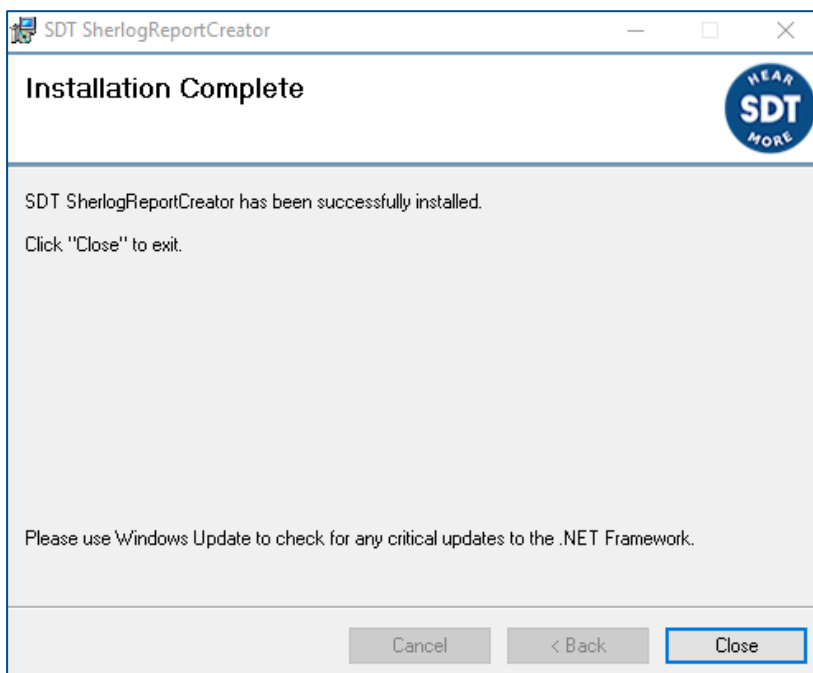
- Click "**Next**".

The following screen appears:



- Click "**Next**".

Wait until installation is complete, the following screen appears:



- Click "**Close**" to complete the setup.

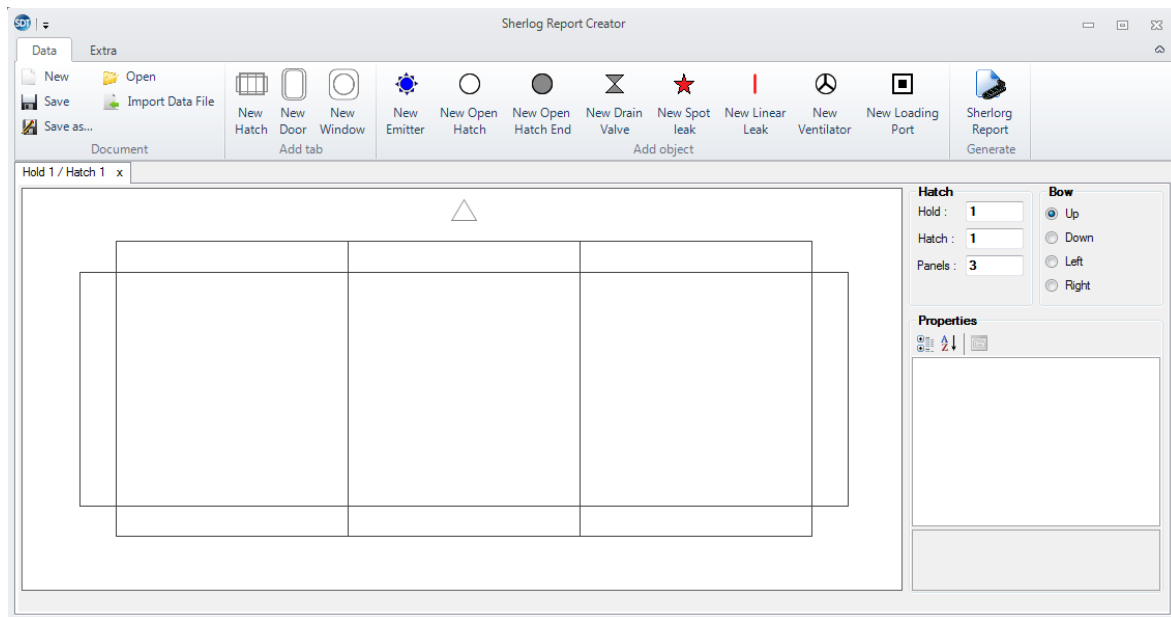
## 2. Using the SDT Sherlog Report Creator

Once the software is installed, you can insert all the necessary data to create enhanced Hatch Cover, Door or Window Test reports.

Proceed as follows:

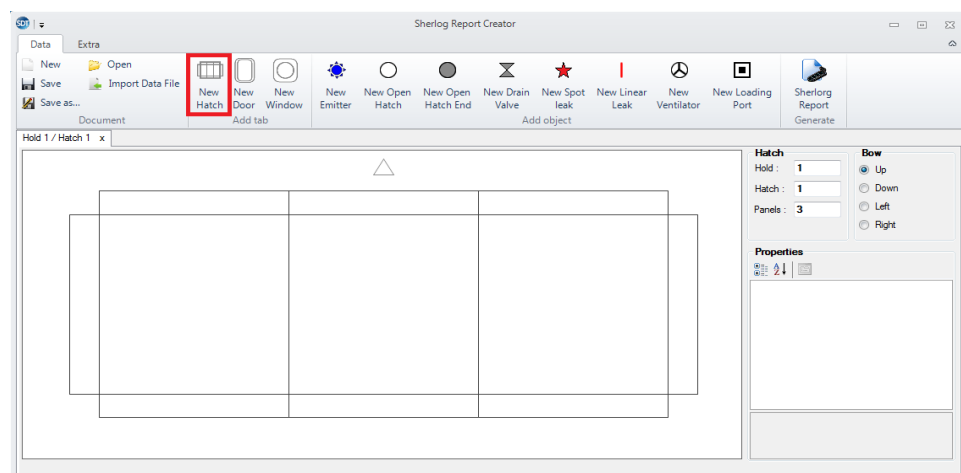
- Launch the software “SDT - Sherlog Report Creator”.

The screen displays the main page.

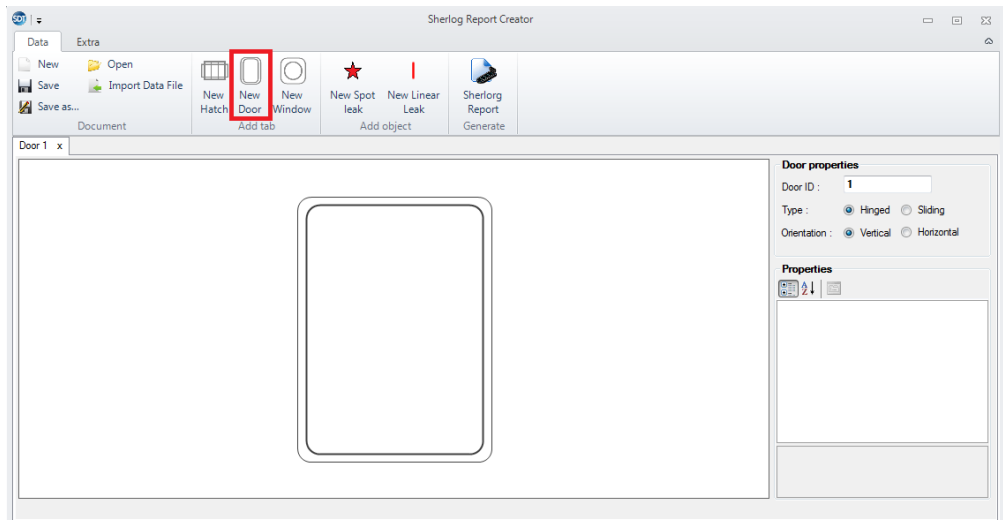


From this point you can:

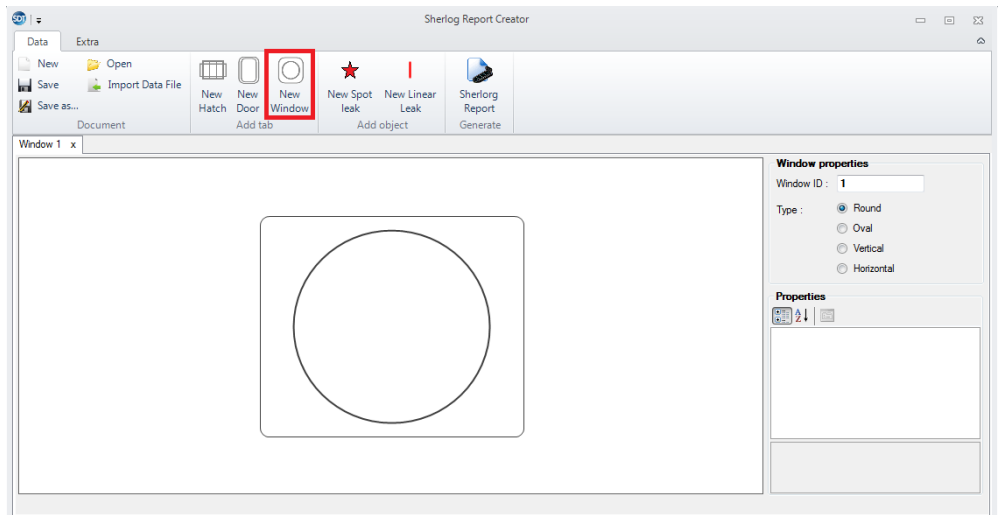
- Add new hatch covers, doors or windows
  - hatch covers:
    - Identify the hatch covers
    - Add the bow position
    - Change the number of panels of the hatch cover
    - Add emitters, drain valves, leaks, ... to the hatch cover



- door:
  - Identify the door
  - Change the type of the door
  - Change the orientation of the door
  - Add spot leak and linear leak to the door



- window:
  - Identify the window
  - Change the type of the window
  - Add spot leak and linear leak to the window

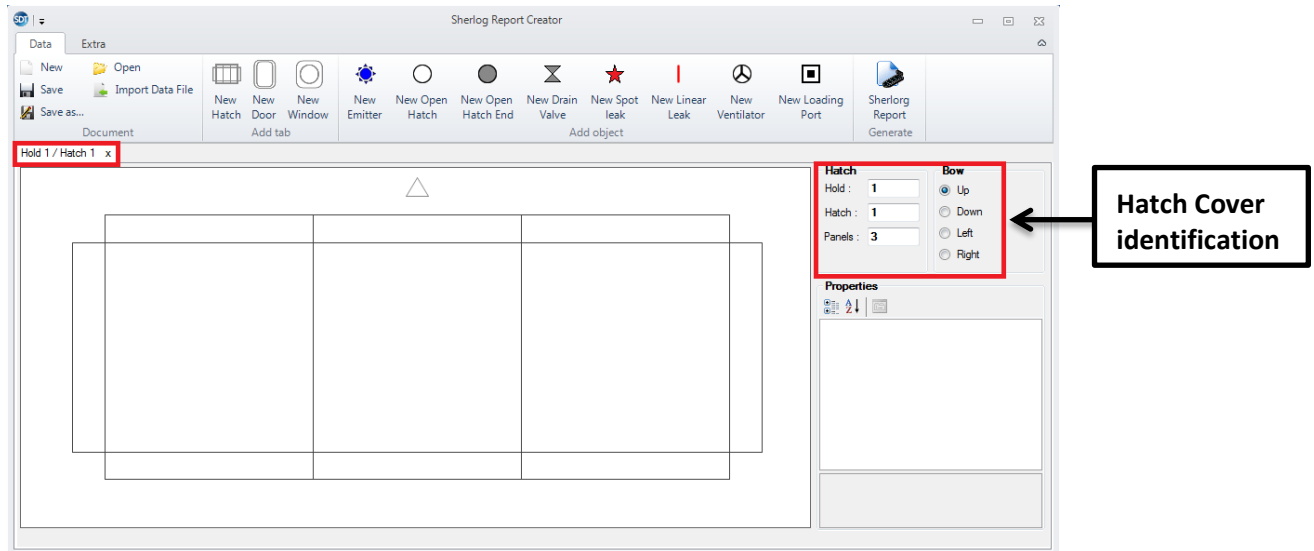


- Import data from a SDT170 Sherlog TA text file.

## a. Add new hatch covers

### Hatch cover identification

At start-up a single hatch cover is automatically created as “Hold 1 / Hatch 1”.  
A hatch cover is always created with three panels on it.

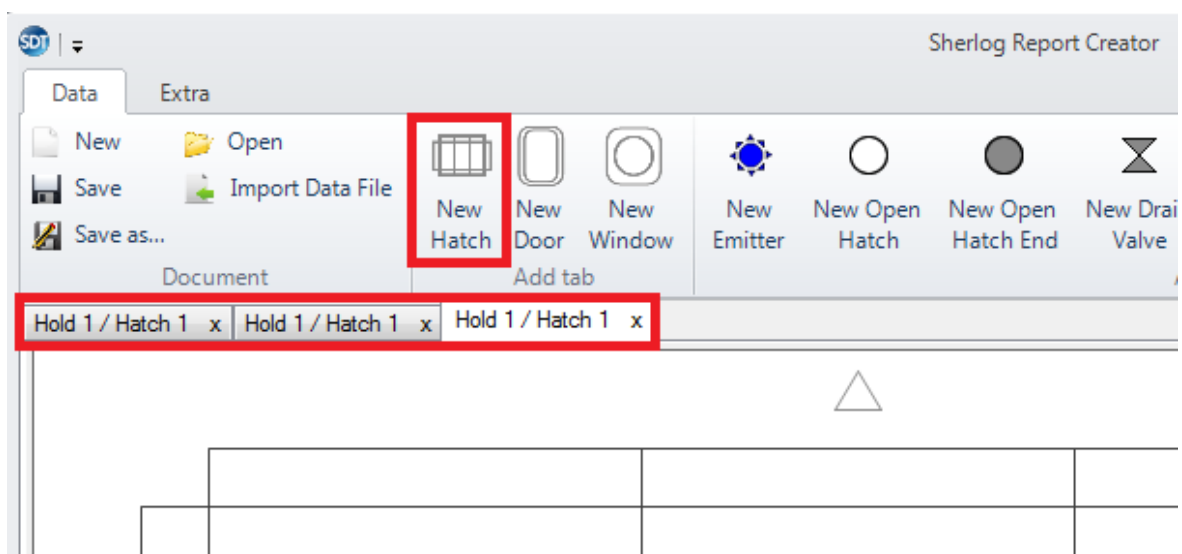


- Change the hold and hatch numbers to match your identification plan
- Set the correct number of hatch cover panels
- Set the bow position

### Adding a new hatch cover

From the main toolbar, click on “**New Hatch**”.

A new tab page is added to the application which represents the new hatch cover. A new added hatch is always marked as “**Hold 1 / Hatch 1**”, but this can be changed by changing the hatch cover identification parameters.

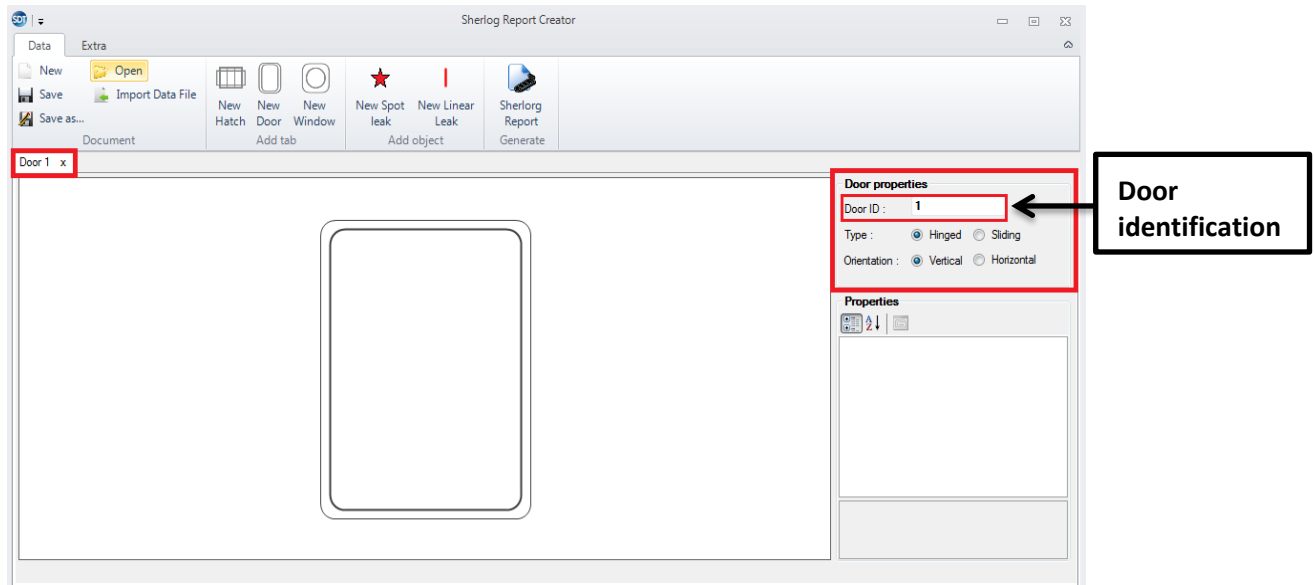


## b. Add new doors

### Door identification

The door is automatically created as “Door 1”.

A door is always created with a hinged and with vertical orientation.

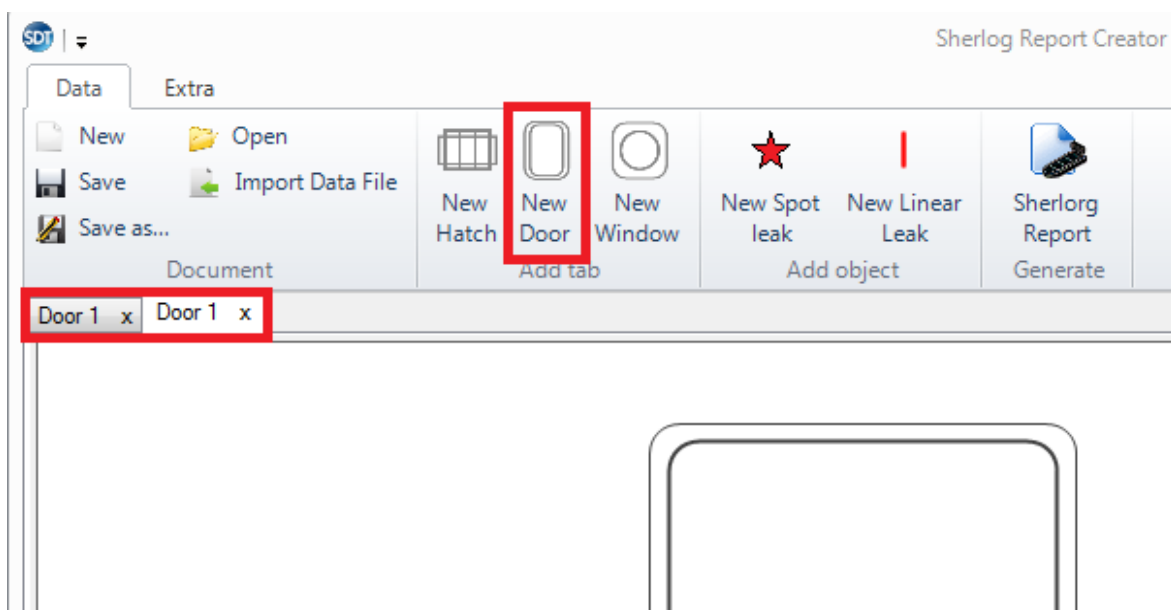


- Change the door numbers to match your identification plan
- Set the type of door (Hinged or Sliding)
- Set the orientation of door (Vertical or Horizontal)

### Adding a new door

From the main toolbar, click on “**New Door**”.

A new tab page is added to the application which represents the new door. A new added door is always marked as “**Door 1**”, but this can be changed by changing the door identification parameters.

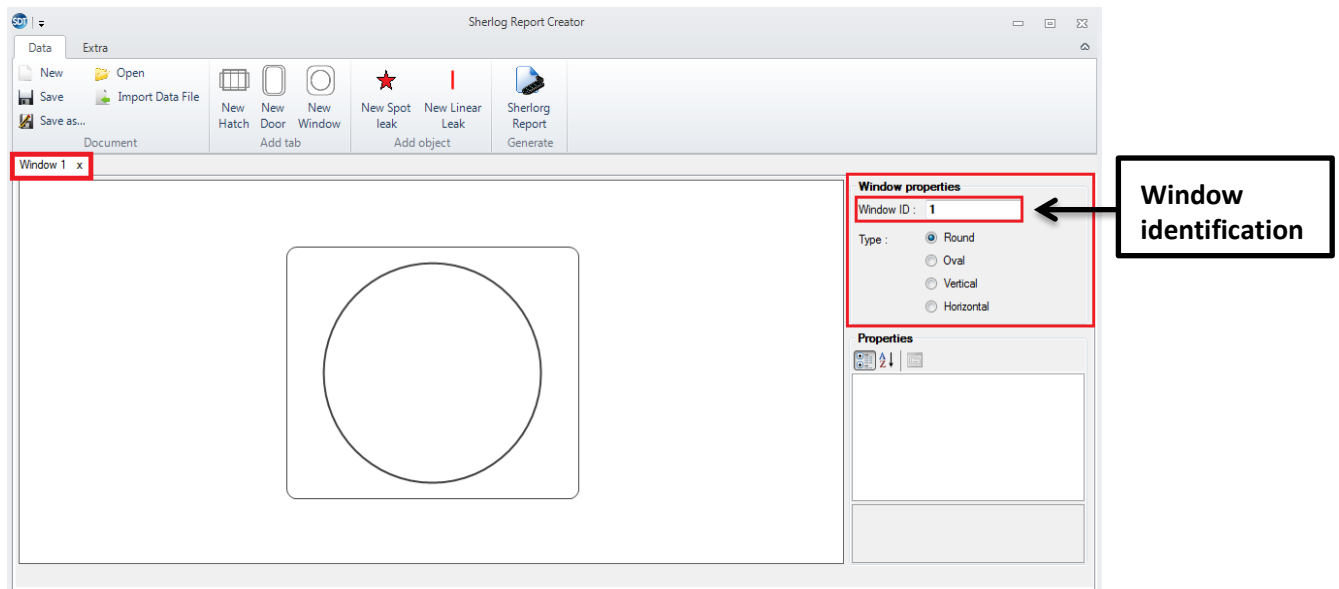




## c. Add new windows

### Window identification

The window is automatically created as “Window 1”.  
A window is always created with a round form.

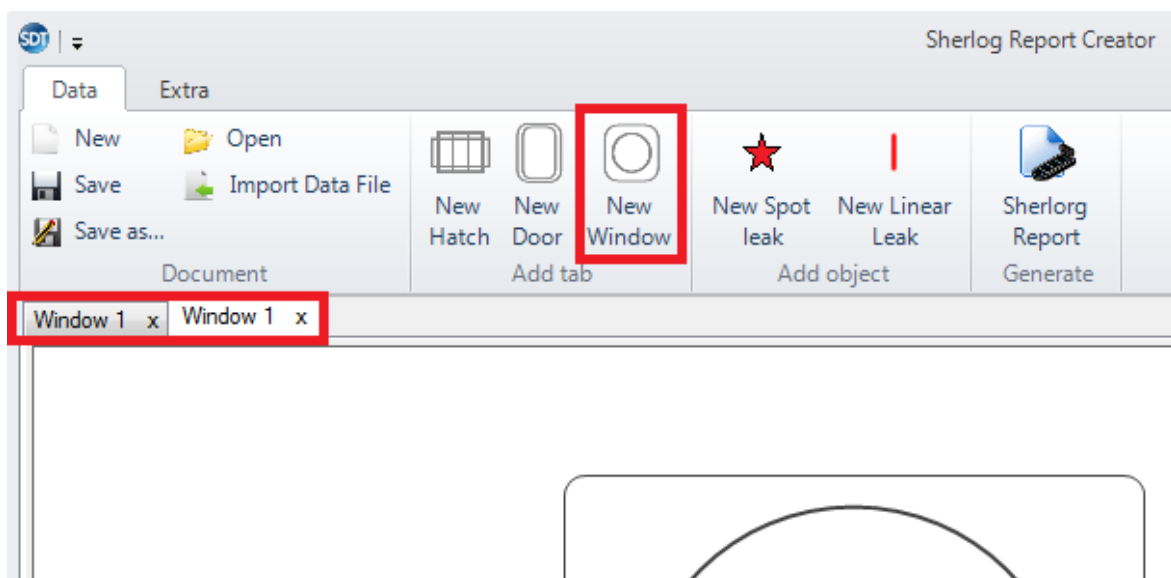


- Change the window numbers to match your identification plan
- Set the type of window (Round, Oval, Vertical or Horizontal)

### Adding a new window

From the main toolbar, click on “**New Window**”.

A new tab page is added to the application which represents the new window. A new added window is always marked as “**Window 1**”, but this can be changed by changing the window identification parameters.

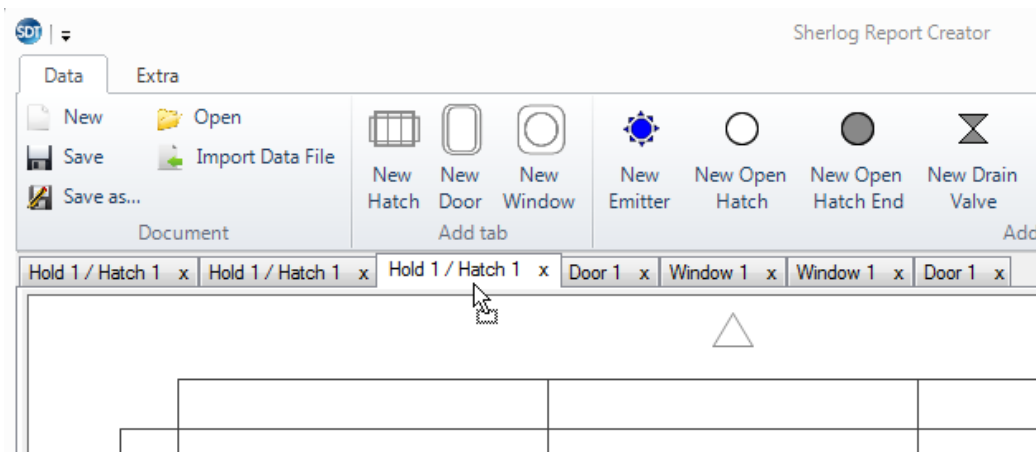


#### d. Change the tab position

A generated report will follow the same order for all "hatch cover", for all "door" and for all "window" as the tab position.

E.g: The outer most left hatch cover tab will appear as first on the report, the outer most right tab will appear as last.

The tab position can be changed by drag and drop.

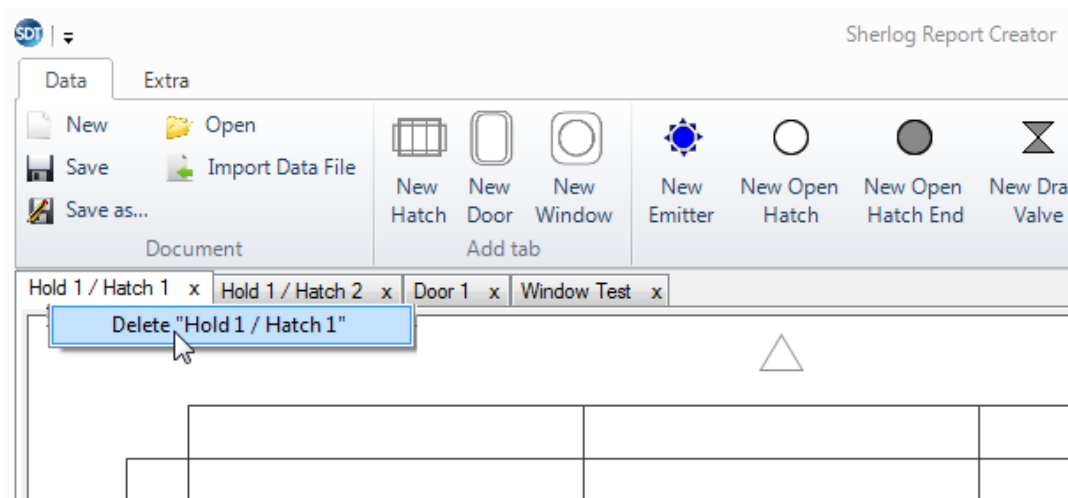


#### e. Remove a tab

There are 3 ways to delete a tab:

- Right click on the tab you wish to delete.
- Click the scroll bar using the mouse over the tab to delete.
- Click on the cross located at the right extremity of the tab to delete.

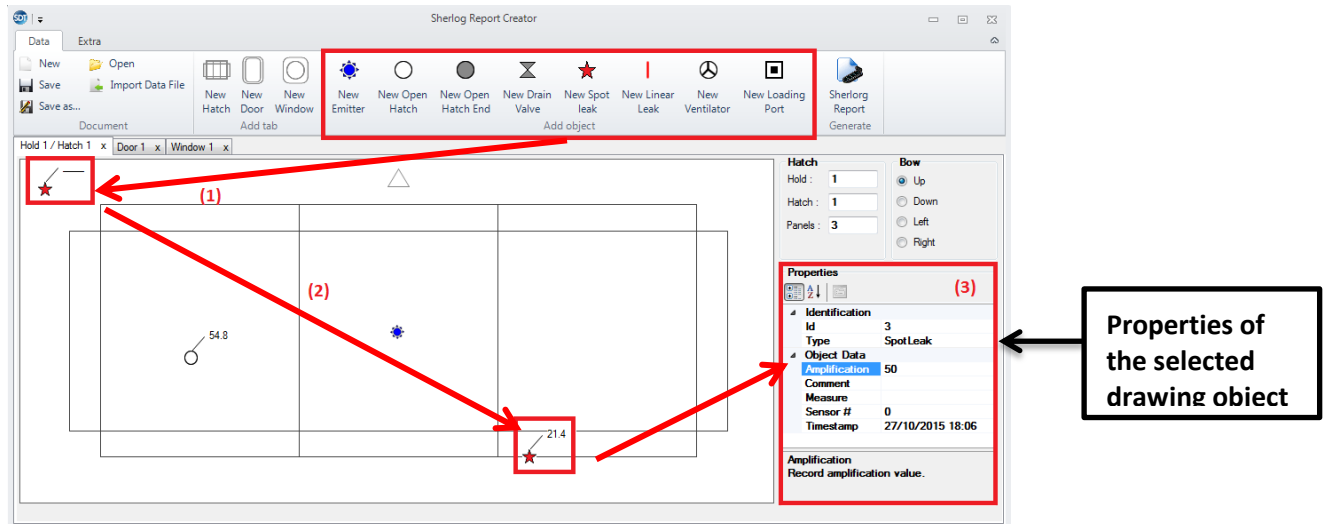
A context menu is shown which contains a delete button for the selected tab. Click on the delete button to remove the selected tab.



## f. Add and remove new leaks, drains valves, ...

### Adding a new objects to the drawing

Leaks, drain valves, ... can be added by clicking on the corresponding toolbar button. A new added object always appears in the top left corner of the drawing.



- Add new objects to the drawing (1)
- Drag and drop the object to the correct position in the drawing (2)
- Fill in the properties of the object in the “Properties” section of the application. (3)
- The measured value can also be inserted or changed by double clicking the value on the drawing.

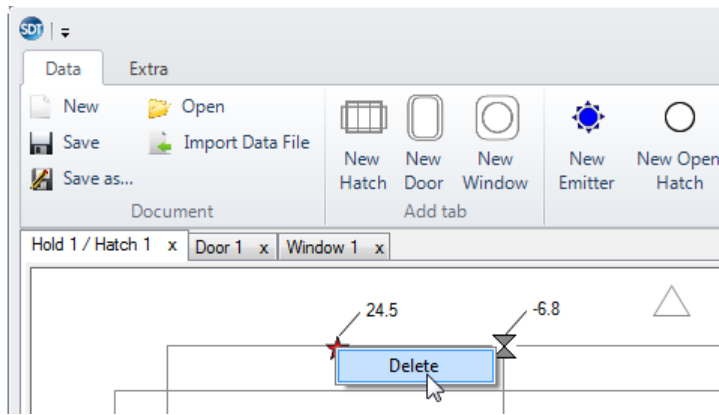
### Object properties

Id	Id of the object. Objects are listed on the report in ascending order of their Id. To change the leak position in the report, you have to change the leak Id.
Type	Type of the object. Objects types can be changed after creation, by clicking on the type in the Properties section of the application. There are eight possible object types available. <ul style="list-style-type: none"> <li>• Emitter</li> <li>• Open Hatch In</li> <li>• Open Hatch End</li> <li>• Drain Valve</li> <li>• Linear Leak</li> <li>• Spot Leak</li> <li>• Ventilator</li> <li>• Loading Port</li> </ul>
Amplification	Value of the amplification during the measurement.
Comment	Additional comment.
Measure	Measured value
Timestamp	Local date and time of the measurement. By default the system date and time is used.

### Remove objects from the drawing

Right click on the drawing object you wish to delete.

A context menu is shown which contains a delete button for the selected object. Click on the delete button to remove the selected object from the drawing.

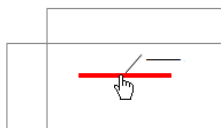


### **Convert a horizontal linear Leak to a vertical leak**

When a linear leak as added, a horizontal leak is displayed on the drawing. By resizing it, it's possible to convert the horizontal leak into a vertical leak.

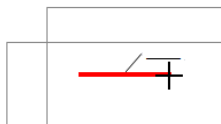
Clicking on the outer right end of a linear leak allows you to resize the leak. Once the leak height is greater than the leak width, a vertical linear leak is drawn.

#### **Move the leak**

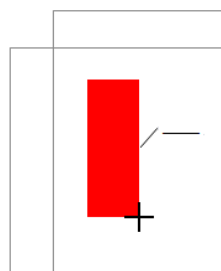


- Click in the middle of a linear leak to move it around

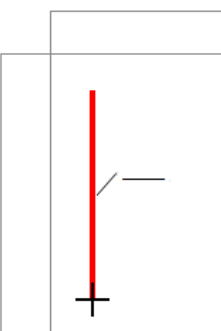
#### **Resize the leak**



- Click at the outer right end of a linear leak to resize it



- Resize the leak.
- Once the leak height is greater than the leak width, a vertical linear leak is drawn.



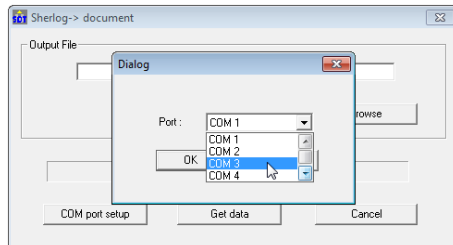
- After a resize, the linear leak is adapted to the correct width.

## g. Import data from a Sherlog TA file

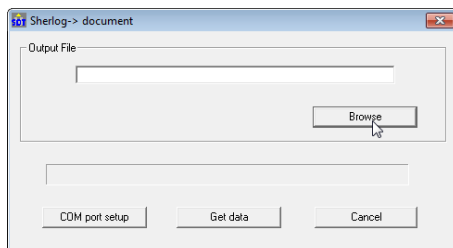
### Download data from the Sherlog TA

Before you can import the data from a Sherlog TA device, you need to download the data from the device by using the Sherlog TA download software.

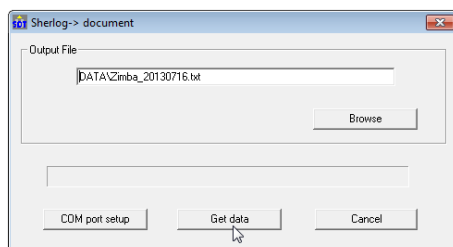
- Start the Sherlog TA download software
- Select the correct COM port



- Select an output file



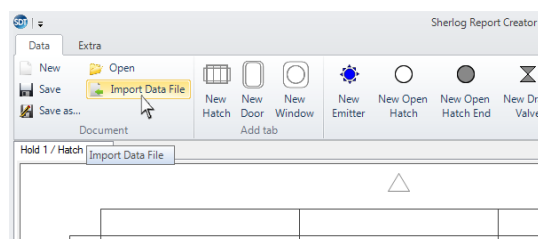
- Start the data download



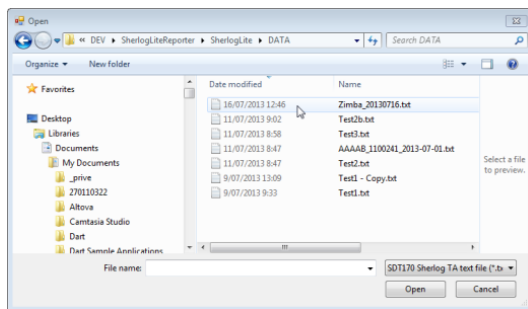
### Import the downloaded data in the Sherlog Report Creator software

After you downloaded the data from a Sherlog TA device, you can import the generated text file in the Sherlog Report Creator software.

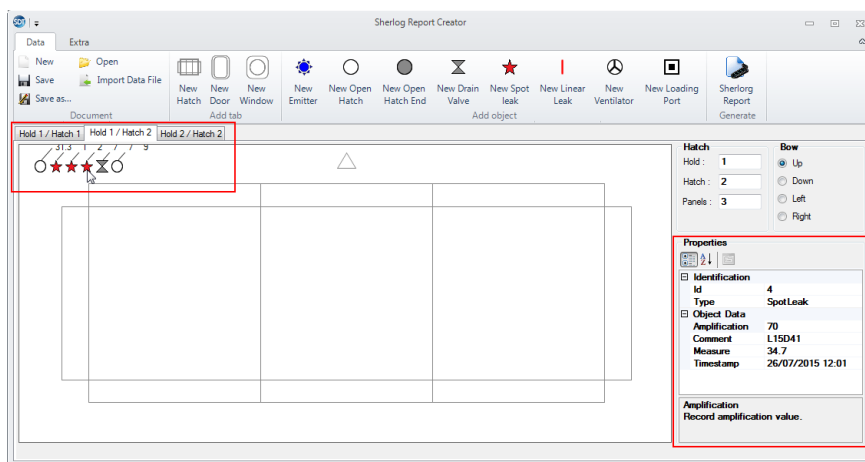
- Start the Sherlog Report Creator software
- Click on "Import Data File"



- Select the file you downloaded with the Sherlog TA software

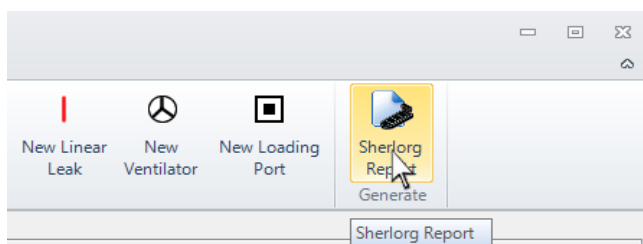


- The following data is extracted from the file
  - ➔ Hold and hatch numbers
  - ➔ Leak data
    - Id
    - Amplification
    - measured value
    - Comment
- Adapt the drawing to your needs.
  - set the number of panels
  - set the bow direction
  - add an emitter
  - position the measurements on the drawing
  - change leak types



## h. Generate a report

After you completed the data input click on the “Sherlog Report” button on the main toolbar to generate a report.



- A “Sherlog test report” is generated and saved on the specified location.



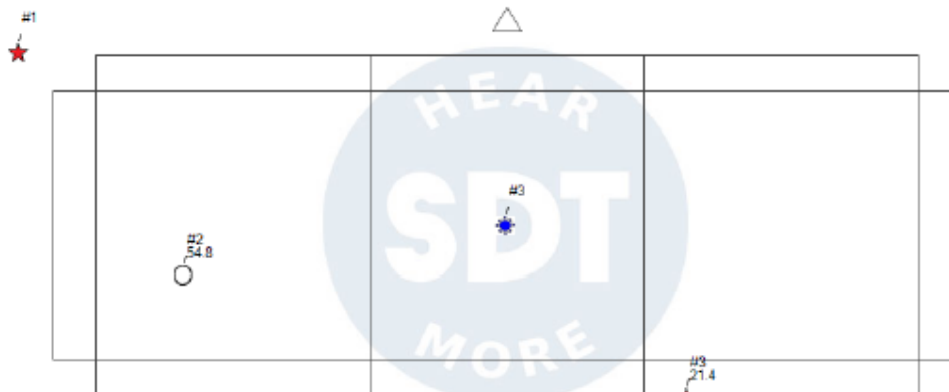
## Ultrasound Solutions

# Sherlog Hatch Test Report

Vessel Name \_\_\_\_\_ Operator name **Your Name**  
 IMO n° \_\_\_\_\_ Operator certificate n° **SDT00000000-0**  
 Port \_\_\_\_\_ Sherlog serial n° **0**  
 Start Date \_\_\_\_\_ Calibration date **2013-01-01**  
 End Date \_\_\_\_\_ Type \_\_\_\_\_

### Functional test transmitter (dBμV)

1	2	3	4	5	6	7	8
20.0	30.0	30.0	45.0	50.5	60.6	77.7	80.0



Created by SDT International, Sherlog Report Creator

Open Hatch	Open Hatch End	Ventilator	Loading Port
Emitter	Drain	Linear Leak	Spot Leak

### Measurements

Hold : 1 Hatch : 1

#	Leak type	dBμV	A	Sensor #	Date/Time measure	Comment
1	Spot Leak			0	2017-05-29 17:02	
2	Open Hatch	54.8		0	2017-05-29 17:02	
3	Spot Leak	21.4		0	2017-05-29 17:02	

SDT International sa-nv • Bd de l'Humanité 415 • B-1190 Brussels (Belgium) • Tel: +32(0)2 332 32 25 • email: info@sdt.be  
 SDT North America • 1532 Ontario Street, Cobourg, ON • Phone: 1-800-667-5325 | 1-905-377-1313 • email: info@sdttheardmore.com  
 www.sdtultrasound.com

Print date: 2017-05-29

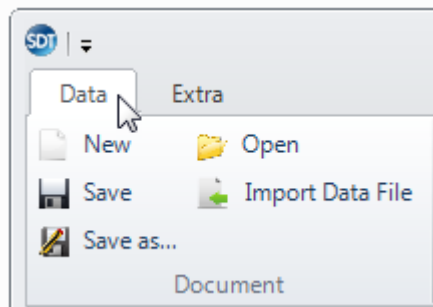
SherlogReportCreator\_2017-05-29.docx

Page 1 of 1

Example of the generated Sherlog Report

## i. Additional options

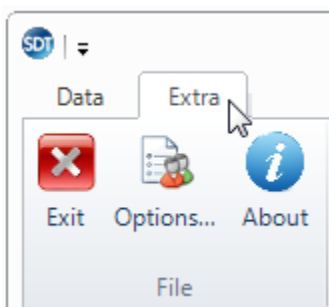
To access the Data menu, click on the “Data” tab of the main toolbar.



The following options are available:

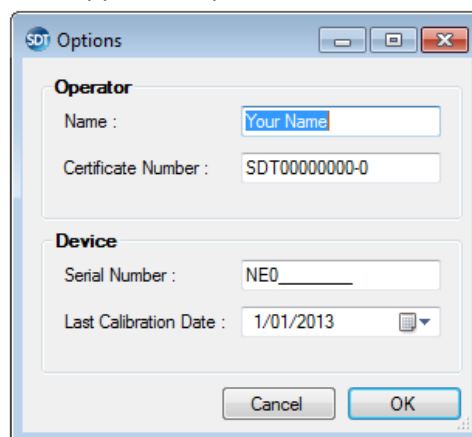
- New → Start a new report
- Save → Save the current report as a .rep file
- Save as ... → Save the current report under a different name
- Open → Open an existing report file (.rep file)
- Import Data File → Import the generated text file for Sherlog TA device

To access the Extra menu, click on the “Extra” tab of the main toolbar.



The following options are available:

- Exit → Exit the application
- Options... → General application parameters can be stored



- About → About the Sherlog Report Creator